

# Sterling Bridge

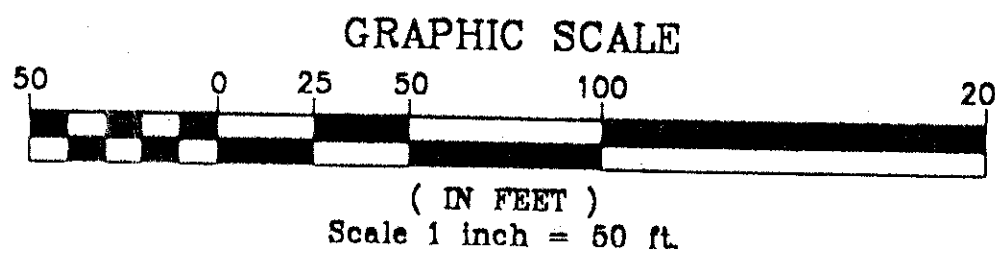
616-002

# 165

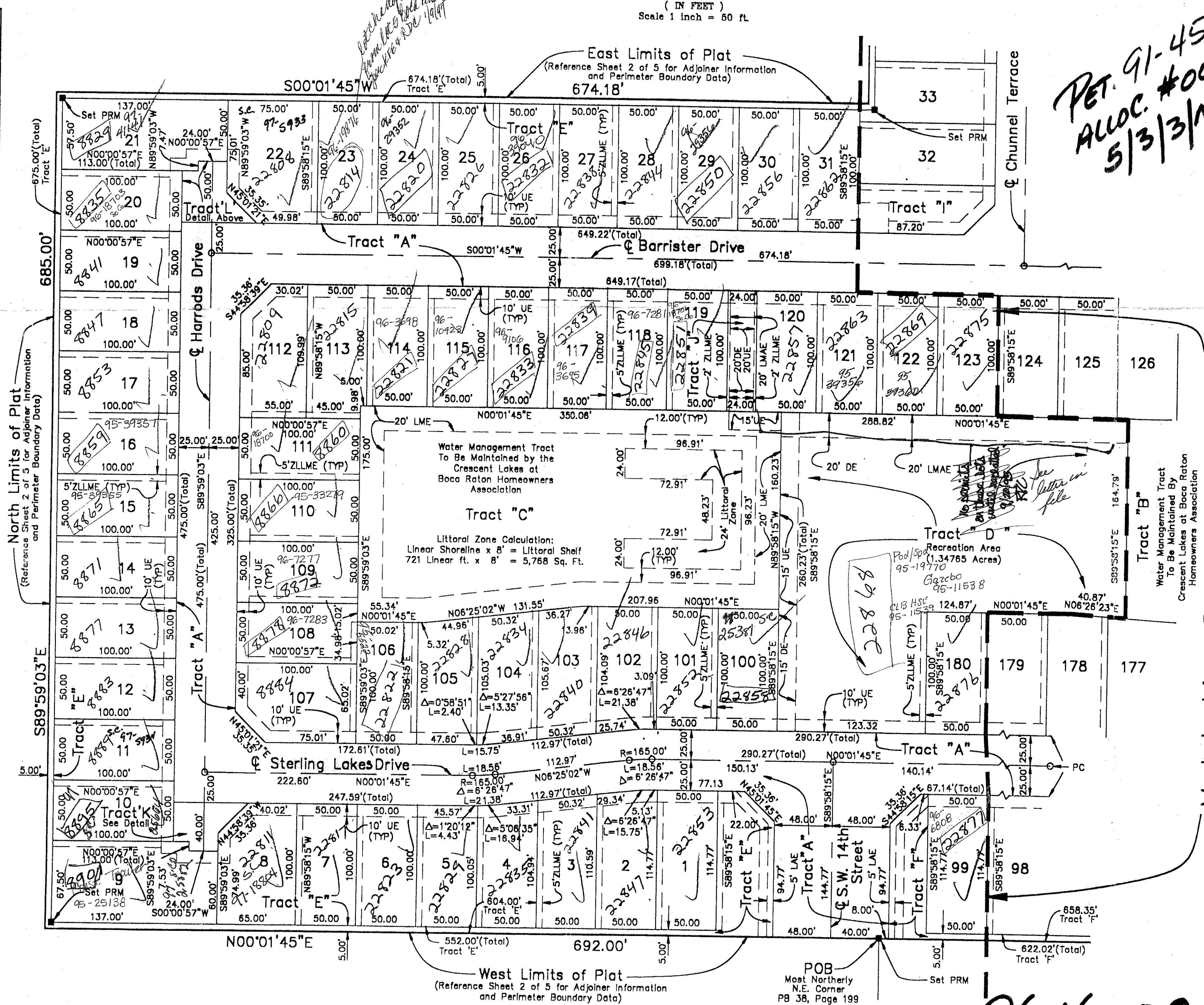
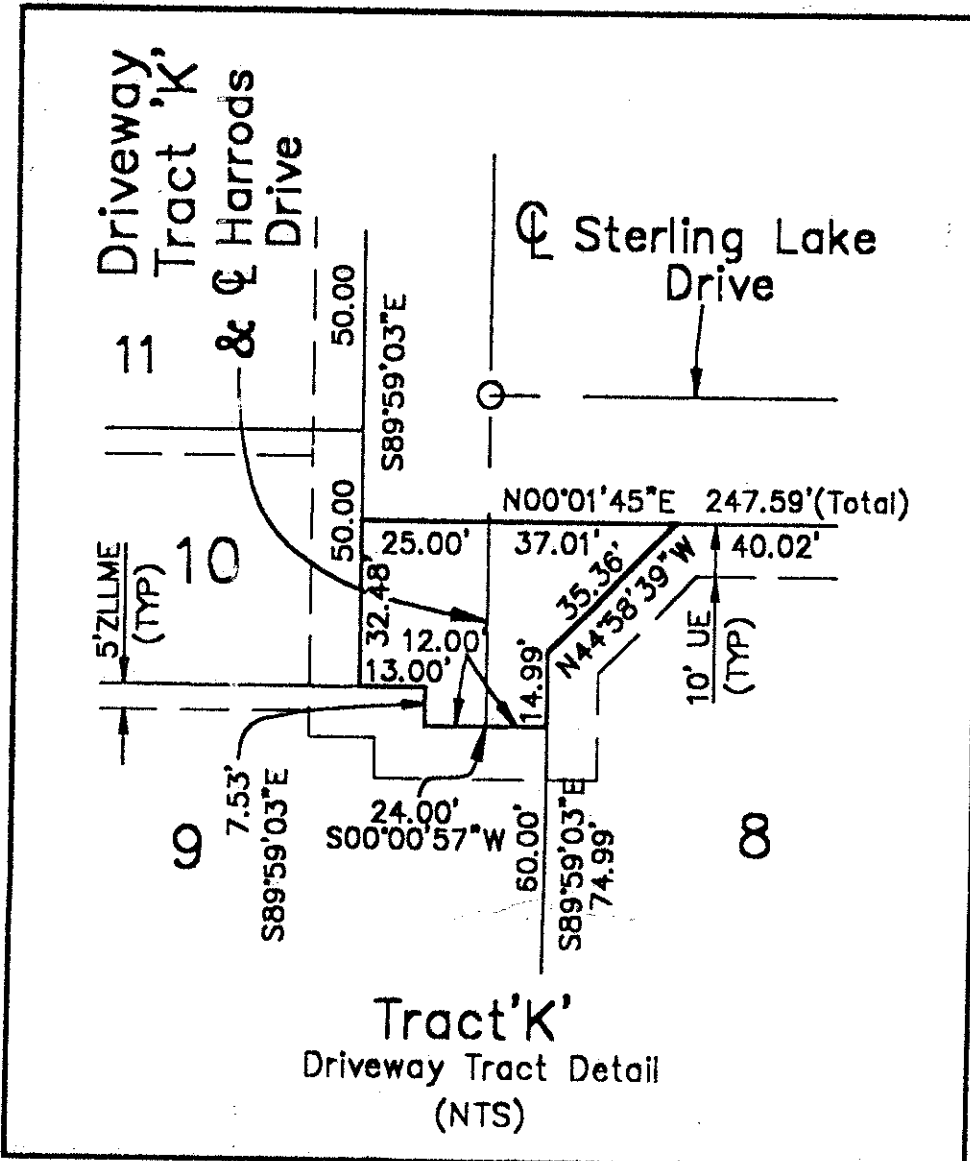
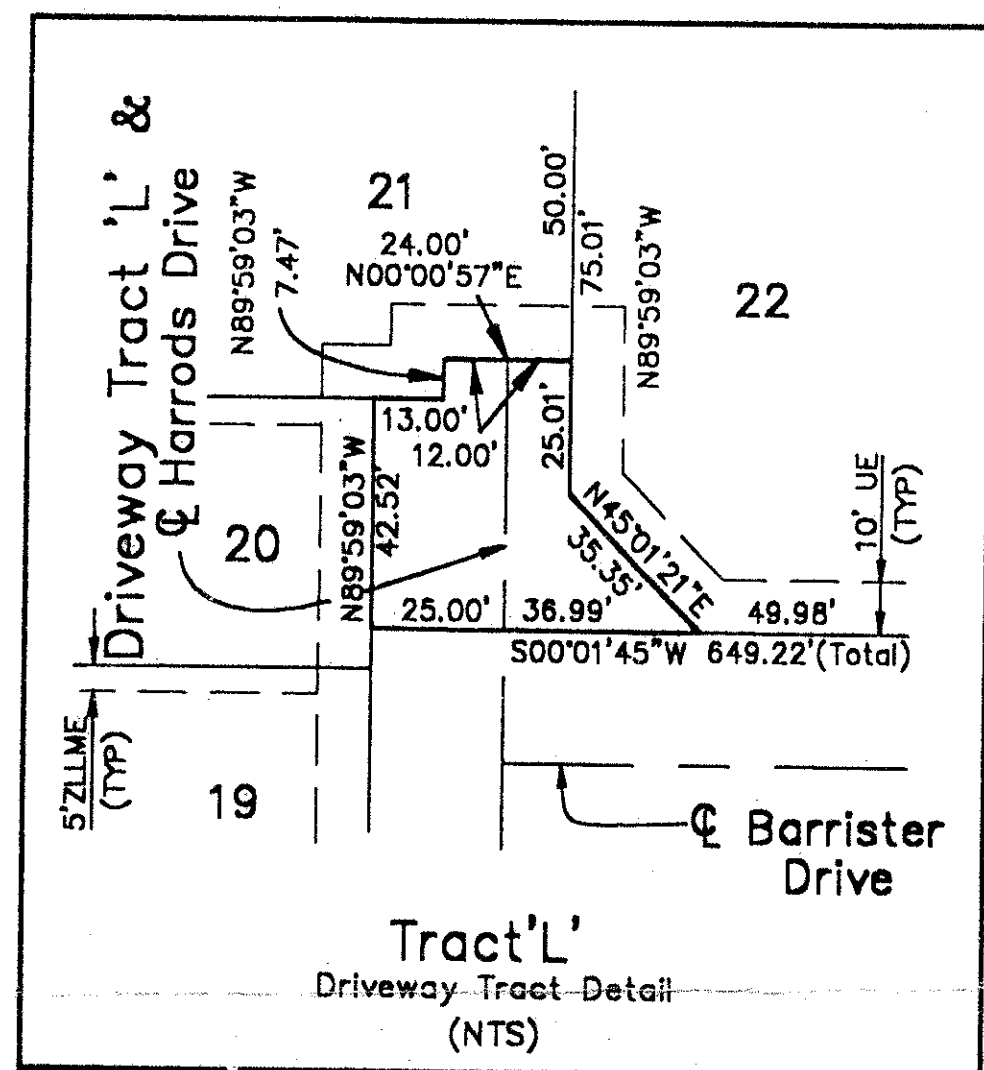
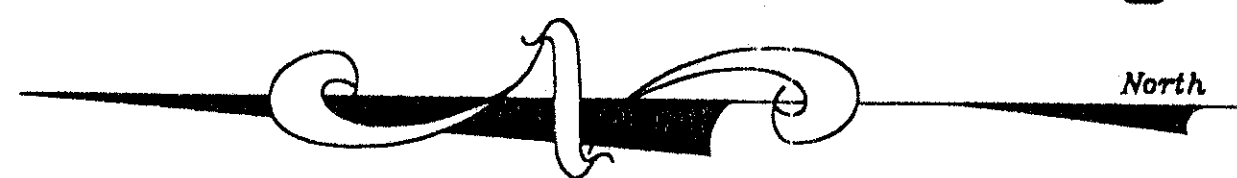
Situate in Sections 29, 30, 31, and 32, Township 47 South Range 42 East Being a replat of all of Tracts 86, 87, 88, and the west half of Tract 89, Block 80, a portion of Tracts 5, 6, 7, and 8, Block 83, and the adjacent abandoned roadways, Palm Beach Farms Company Plat No. 3 as recorded in Plat Book 2, Page 45 through 54, inclusive, Public Records of Palm Beach County, Florida

STATE OF FLORIDA SS  
COUNTY OF PALM BEACH  
This plat filed for record at \_\_\_\_\_  
this \_\_\_\_\_ day of \_\_\_\_\_  
19\_\_\_\_ and duly recorded in Plat  
Book \_\_\_\_\_ on page \_\_\_\_\_  
DOROTHY H. WILKEN, CLERK of the  
Circuit Court.  
By: \_\_\_\_\_ D.C.

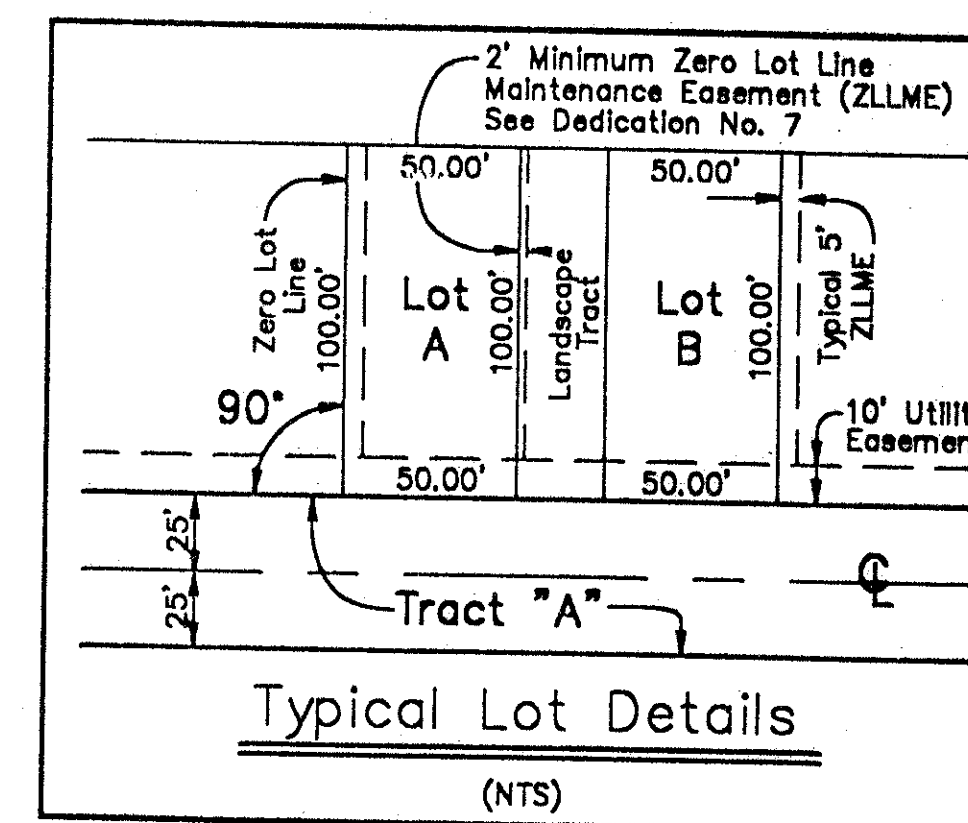
August, 1994



Sheet 3 of 5

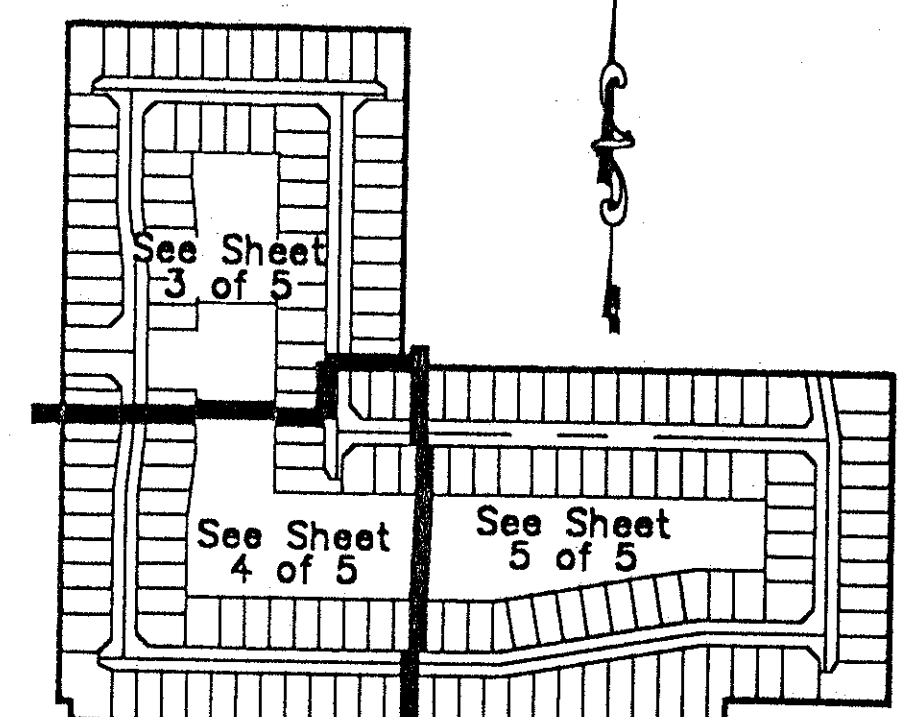


*PET. 91-45  
ALLOC. #0001  
5/3/3/M*



- Map Legend :
- ⊙ = Permanent Control Point
  - = Permanent Reference Monument
  - = Centerline
  - Δ = Central Angle (Delta)
  - DE = Drainage Easement
  - DT = Driveway Tract
  - ft. = Feet
  - L = Arc Length
  - LAE = Limited Access Easement
  - LME = Lake Maintenance Easement
  - LMAE = Lake Maintenance Access Easement
  - ORB = Official Record Book
  - PB = Plat Book
  - PC = Point of Curvature
  - PCP = Permanent Reference Point
  - Pg = Page
  - PRM = Permanent Reference Monument
  - R = Radius Length
  - Typ = Typical
  - UE = Utility Easement
  - ZLLME = Zero Lot Line Maintenance Easement

Match Line See Sheet 4 of 5



Atlantic - Caribbean Mapping, Inc.  
PROFESSIONAL LAND SURVEYORS AND MAPPERS  
357 Liana Drive  
West Palm Beach, Florida 33415  
(407) 687-5898 - Fax (407) 471-8752

Project No. 93445    Dwg No. 445\_P003    Plat of Sterling Bridge

0616-002

SUBDIVISION - Sterling Bridge  
BLOCK 73    PAGE 165  
FLOOD ZONE A0-1    FLOOD MAP #2400  
QUAD # 54    ZONING RS  
SE 91-45    ZIP CODE 33483  
ROAD NAME SAME  
TAZ-789